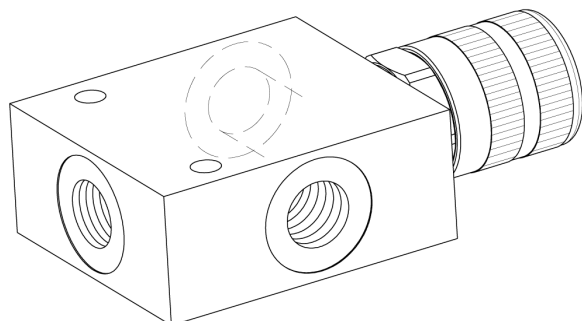
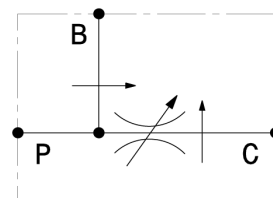


Valvola regolatrice di flusso compensata, tre vie
3 ways, pressure compensated flow regulator valve

mod. RFP-10



Corpo in alluminio
Aluminium body

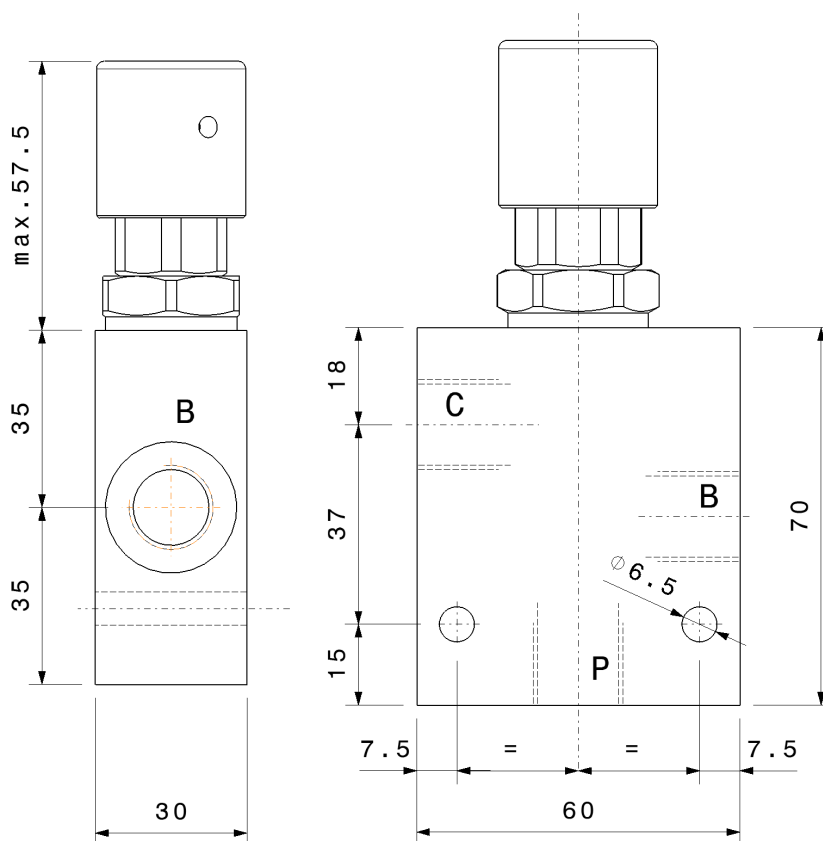


Portata massima Max flow	50 l/min 13.2 gpm
Portata regolata Regulated flow	Vedi Tabella See table
Pressione massima Max pressure	300 bar 4300 psi

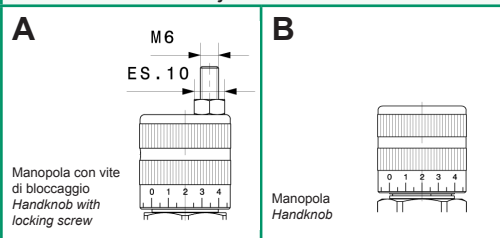
Dati e tarature ottenuti usando olio con viscosità 30 cSt a 50°C
Performances and calibrations are carried out by using hydraulic oil with 30 cSt viscosity at 50°C

Viscosità consigliate Recommended viscosity	10 ÷ 420 cSt
Temperature di lavoro Working temperature	-20 ÷ +90 °C
Filtrazione assoluta Absolute filtration	25 µ

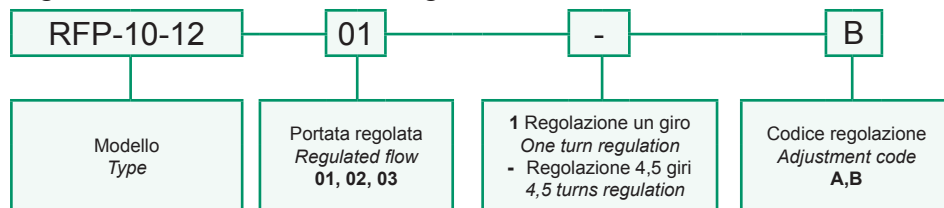
Modello Type	C, B, P
RFP-10-38	3/8" GAS
RFP-10-12	1/2" GAS



Regolazioni
Adjustments



Sigla di ordinazione / Ordering code



Codice Code	Portata regolata Regulated flow
01	0 ÷ 10 l/min 0 ÷ 2.6 gpm
02	0 ÷ 20 l/min 0 ÷ 5.3 gpm
03	0 ÷ 35 l/min 0 ÷ 9.2 gpm